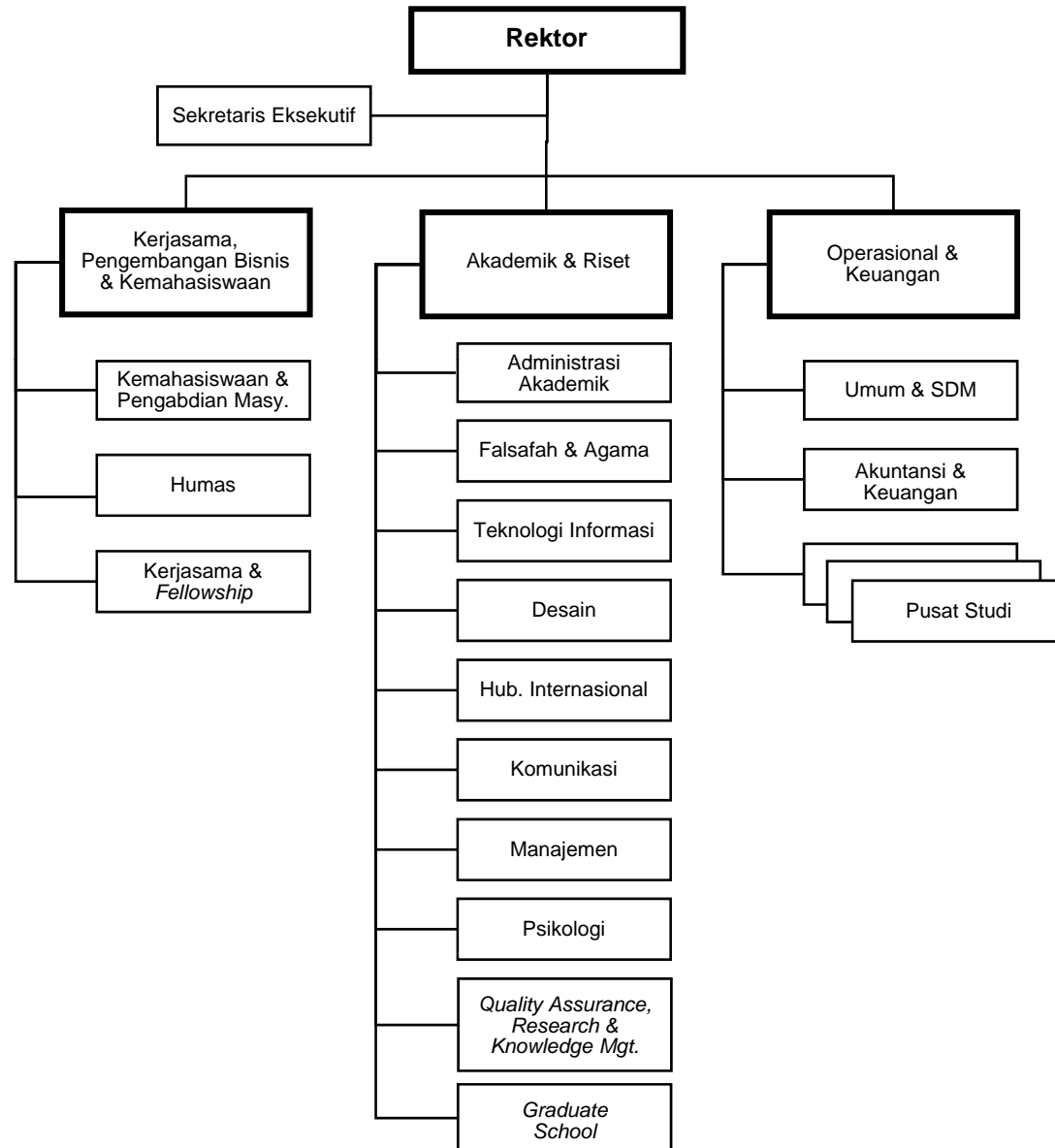


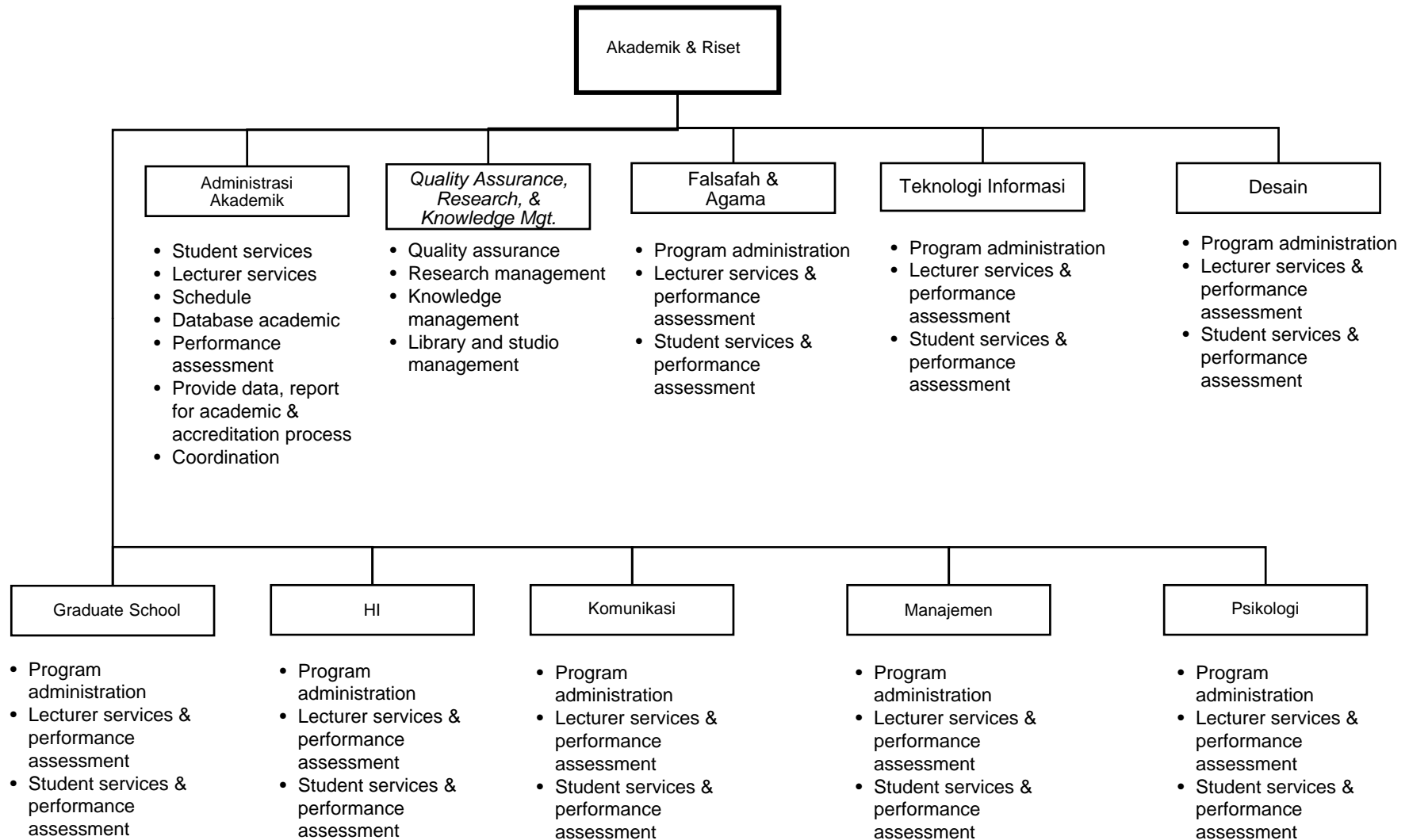
Org. Chart

Decission Document
1 Juni 2009

STRUKTUR ORGANISASI UNIVERSITAS PARAMADINA

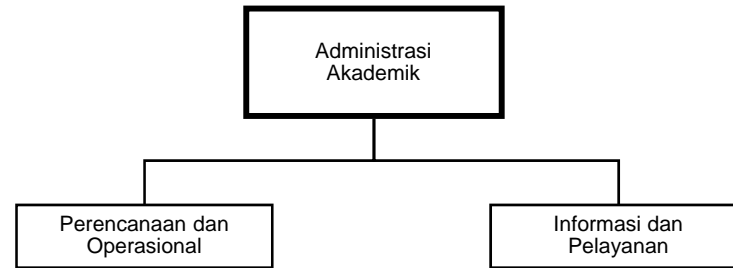


STRUKTUR ORGANISASI PER DEPUTI (1/3)



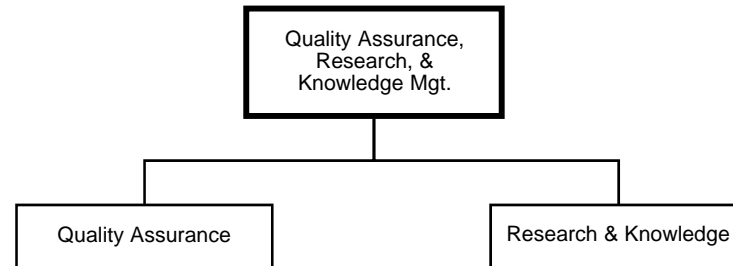
STRUKTUR ORGANISASI PER DEPUTI (1/3)

--- *DIREKTORAT AKADEMIK*

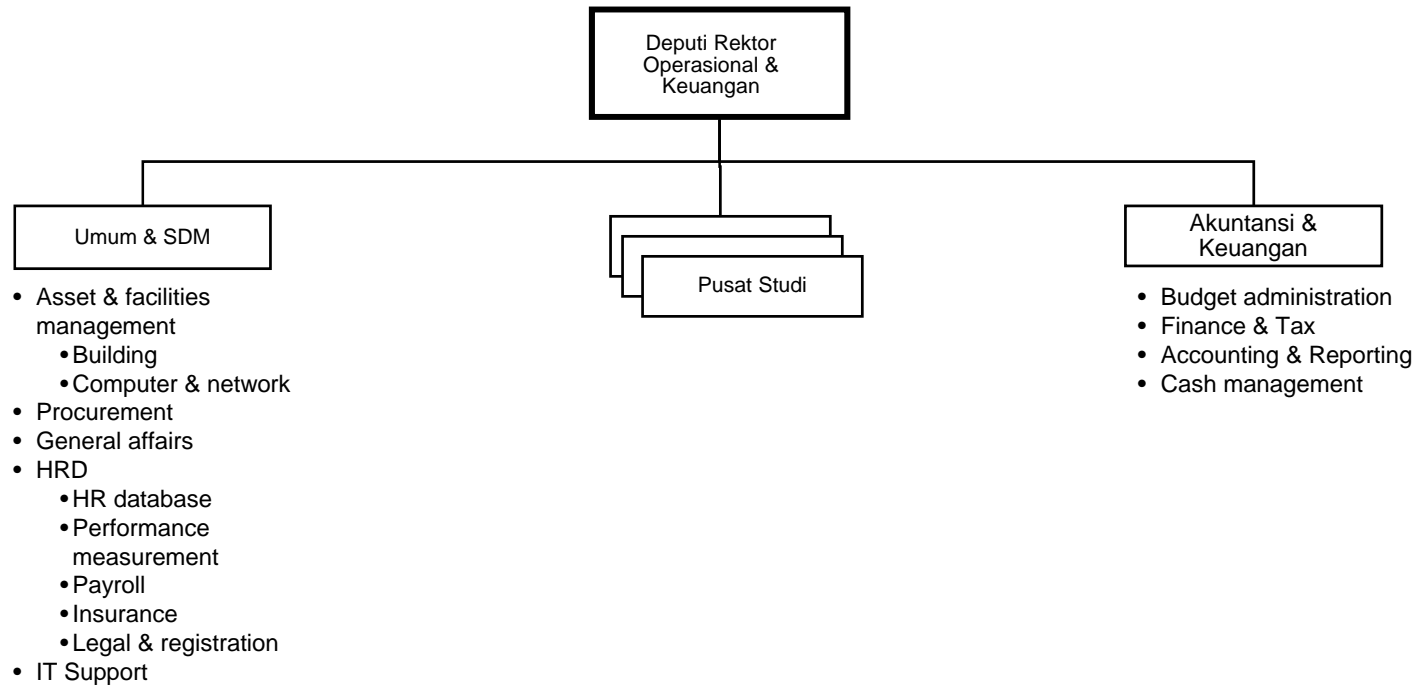


STRUKTUR ORGANISASI PER DEPUTI (1/3)

--- DIREKTORAT QUALITY ASSURANCE, RESEARCH, & KNOWLEDGE MGT.

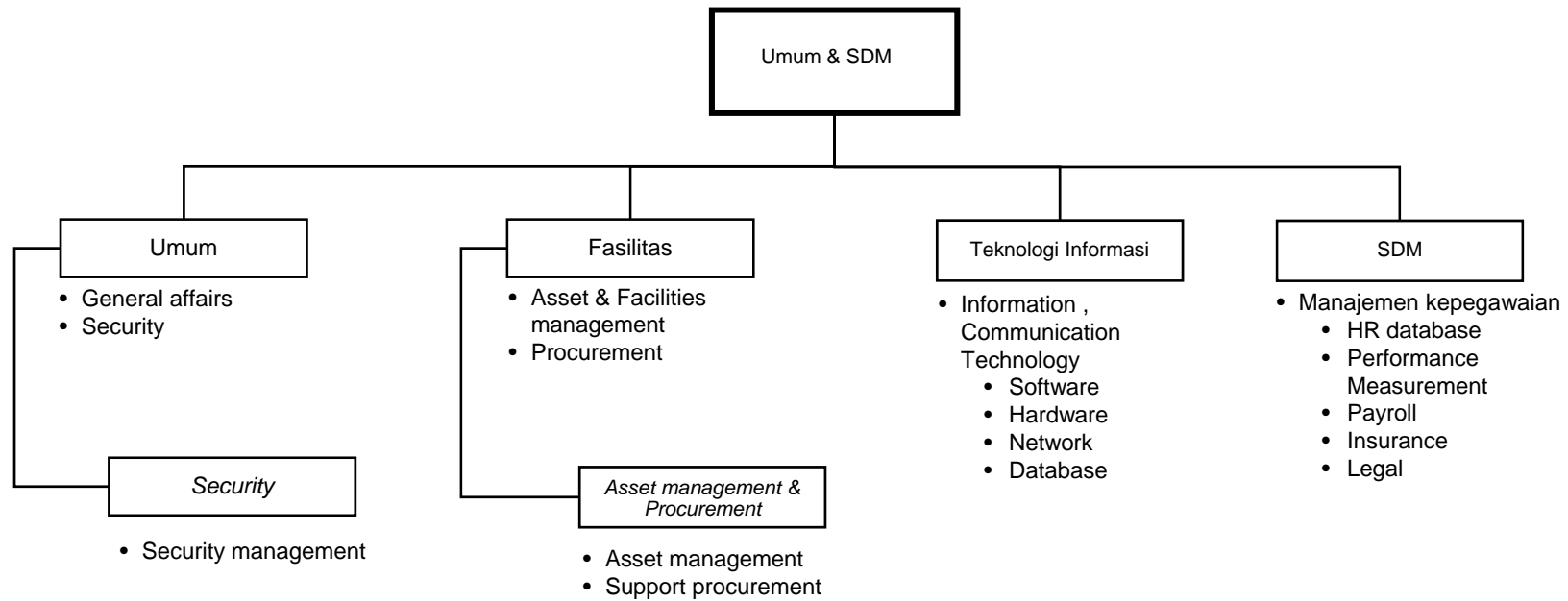


STRUKTUR ORGANISASI PER DEPUTI (2/3)



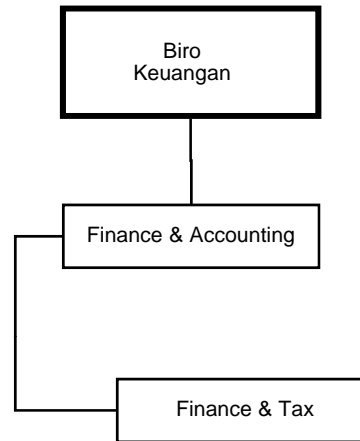
STRUKTUR ORGANISASI PER DEPUTI (2/3)

--- *DIREKTORAT UMUM DAN SDM*



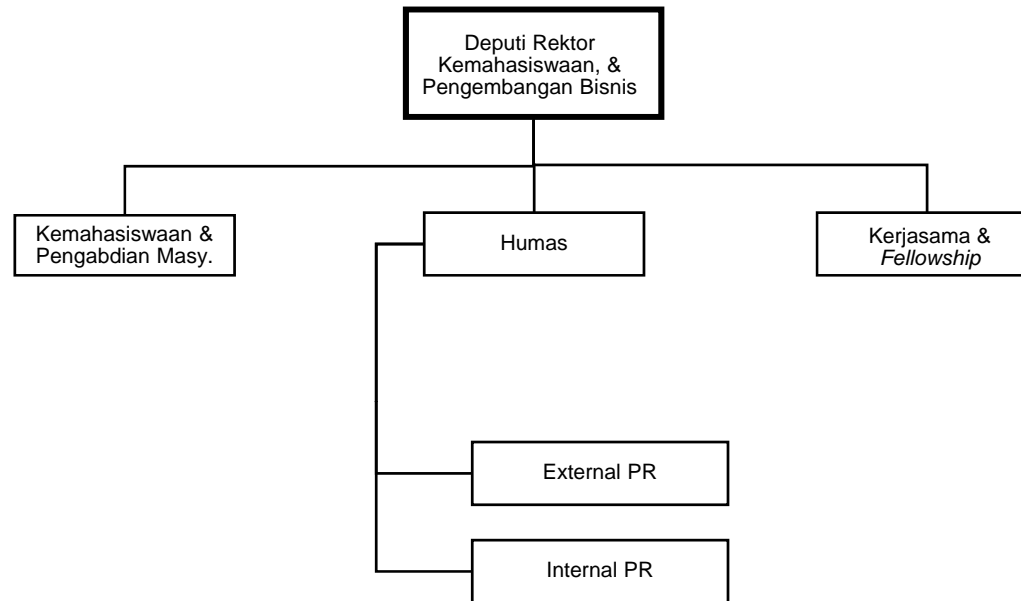
STRUKTUR ORGANISASI PER DEPUTI (2/3)

--- *DIREKTORAT KEUANGAN*



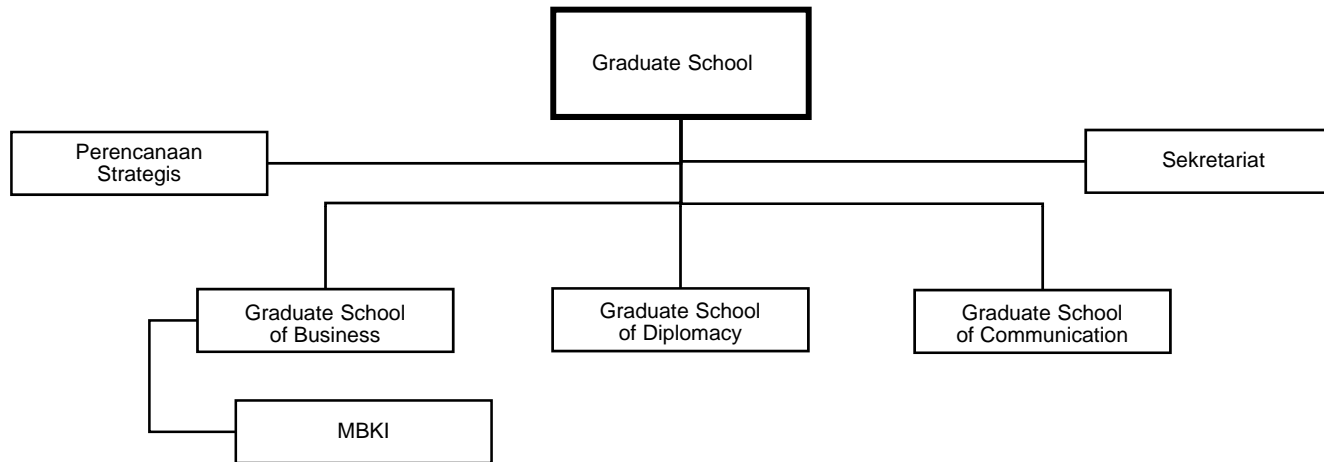
- Accounting & Reporting
- Budget
- Cash management
- Tax

STRUKTUR ORGANISASI PER DEPUTI (3/3)



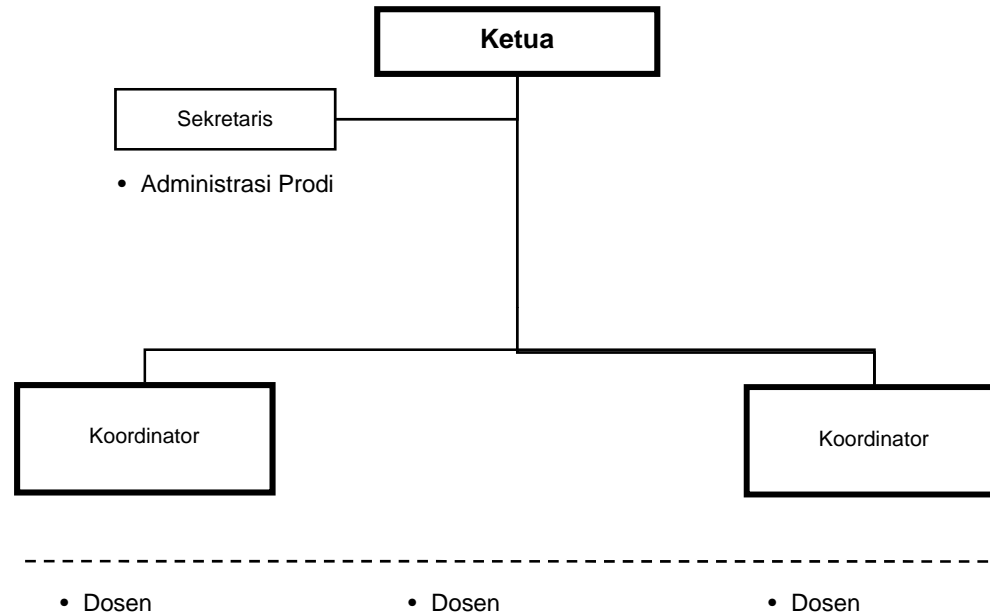
STRUKTUR ORGANISASI UNIVERSITAS PARAMADINA

--- GRADUATE SCHOOL



STRUKTUR ORGANISASI UNIVERSITAS PARAMADINA

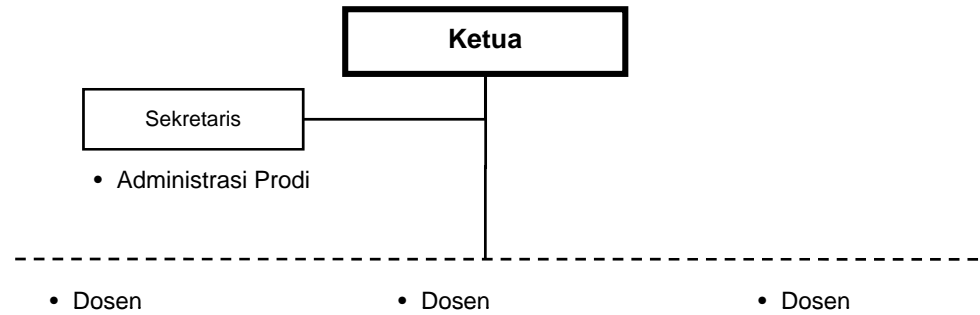
--- Program Studi Tipe A



Kriteria Prodi Tipe A • Jumlah mahasiswa aktif : minimal 500 (lima ratus) mahasiswa

STRUKTUR ORGANISASI UNIVERSITAS PARAMADINA

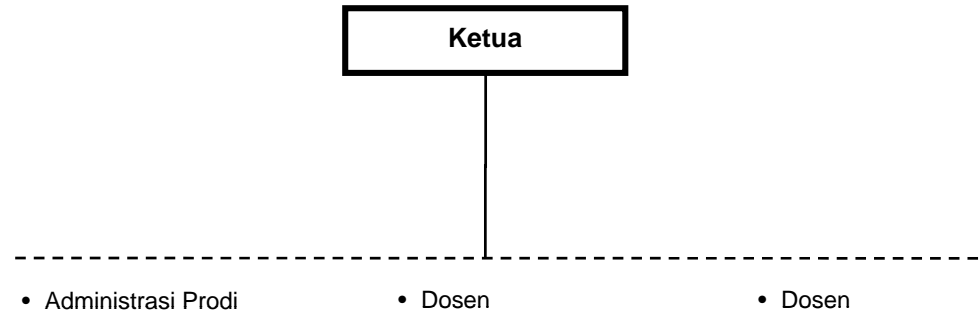
--- Program Studi Tipe B



Kriteria Prodi Tipe B • Jumlah mahasiswa aktif : minimal 100 (seratus) mahasiswa

STRUKTUR ORGANISASI UNIVERSITAS PARAMADINA

--- Program Studi Tipe C



Kriteria Prodi Tipe C • Jumlah mahasiswa aktif : kurang dari 100 (seratus) mahasiswa